

# Step-by-Step Installation of Black Start Mobile Power for EV Charging

2026-06-25 12:51

## Table of Contents

- [The Grid Reliability Problem We're All Facing](#)
- [Why Mobile Power Matters More Than You Think](#)
- [The Installation Blueprint: From Site to Service](#)
- [A Real-World Case: California's Lesson](#)
- [The Tech Behind the Box: Keeping It Simple & Safe](#)
- [Your Next Step: Questions to Ask](#)

## The Grid Reliability Problem We're All Facing

Let's be honest. If you're managing EV charging infrastructure in the US or Europe right now, you're probably losing sleep over grid reliability. I've sat across the table from dozens of fleet managers and site operators this past year, and the story is the same. A major fast-charging hub goes down because of a local transformer fault or a scheduled maintenance blackout. Suddenly, you've got stranded electric trucks, frustrated drivers, and a massive hit to your operational revenue. The traditional solution? Huge, expensive fixed infrastructure upgrades or diesel generators that frankly, go against the very green ethos of your EV project.

This isn't a hypothetical. The [International Energy Agency \(IEA\)](#) points out that global electricity demand from EVs is set to skyrocket, pushing existing distribution networks to their limits. The problem isn't just capacity; it's resilience.

## Why Mobile Power Matters More Than You Think

This is where the concept of a Black Start Capable Mobile Power Container shifts from a "nice-to-have" to a "must-have." Agitation? Think beyond just backup. Think about opportunity cost. Every hour your premium charging stalls are inactive is money lost. Worse, think about the safety and contractual penalties if you're providing charging as a critical service for public transport or logistics.

I've seen this firsthand on site. A client in Germany had a perfect location for a logistics depot charger, but the grid connection quote was astronomical and would take 18 months. They were stuck. A mobile BESS unit, specifically one with black start capability meaning it can boot itself and a section of the grid up from a complete blackout without an external power source became their bridge. It wasn't just a battery; it was a grid-forming asset that allowed them to launch their service immediately while the permanent connection was being built.

## The Core Advantage: Mobility Meets Autonomy

The magic is in the combination. Mobile means you can deploy it in weeks, not years, and move it if your needs change. Black Start Capable means it provides true energy independence. You're not just smoothing demand or shifting solar energy; you're creating a self-healing microgrid at your charging site. This is critical for meeting the reliability expectations baked into standards like IEEE 1547 for distributed resources and UL 9540 for energy storage systems.

## The Installation Blueprint: From Site to Service

So, how do you get one of these units from the factory gate to powering your chargers? Having overseen dozens of these deployments for HighJoule, I can break down the real-world, step-by-step process that actually works.





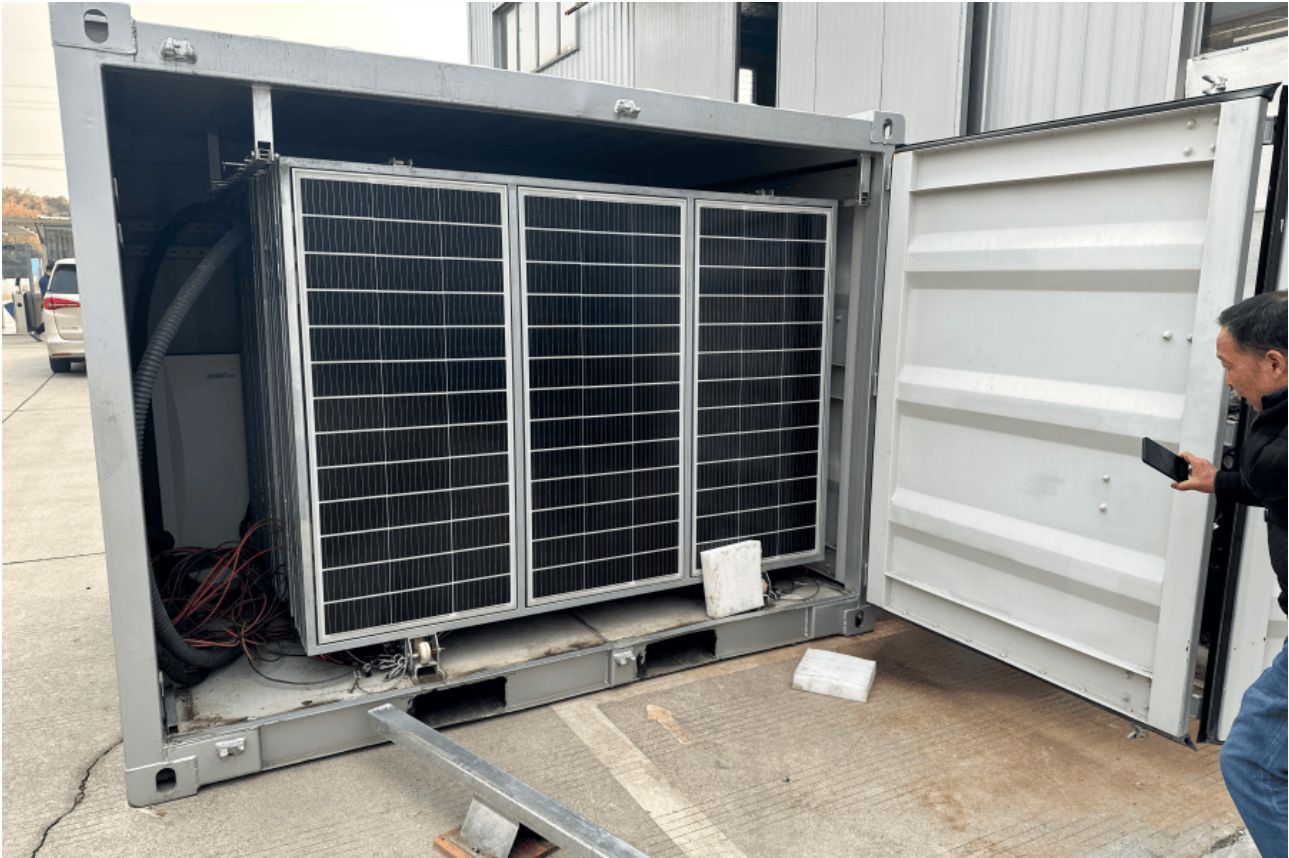
1. **Site Assessment & Foundation (Week 1-2):** This isn't just a slab of concrete. We're looking for stable, level ground with proper drainage, but also evaluating cable routing paths to both the grid connection point and the EV chargers. Accessibility for future service is paramount. All this is done with local civil engineers to ensure it meets regional building codes.
2. **Container Delivery & Positioning (Day 1):** The unit arrives on a flatbed truck. Using a crane or specialized trailers, it's carefully placed on the prepared foundation. This is where the "containerized" design shines—it's a familiar, robust form factor for any industrial site.
3. **Electrical Interconnection (Week 2-3):** This is the critical phase. Certified electricians run the medium-voltage or low-voltage cabling from the local utility transformer (or point of common coupling) to the container's integrated switchgear. Simultaneously, the output is connected to your EV charging dispensers. Every connection, every busbar, is torqued to spec and documented. This is where our insistence on UL and IEC certified components isn't just paperwork—it's what lets the local inspector sign off with confidence.
4. **Commissioning & Grid Integration Testing (Week 4):** Now we power it up. We're not just checking if it turns on. We're running a full suite of tests: verifying the black start sequence, testing the anti-islanding protection (to ensure it doesn't back-feed the grid during an outage unless it's supposed to), and calibrating the energy management system (EMS) to talk to your charging network software. We simulate grid failures and ensure the transition to standalone power is seamless for the chargers.
5. **Operator Training & Handover (Final Day):** We train your staff on the simple daily checks and the basic interface. The system is designed to run autonomously, but we make sure you know how to read its status and who to call (that's us, with local service partners) if anything looks out of the ordinary.

## A Real-World Case: California's Lesson

Let me give you a concrete example. We deployed a 2 MWh mobile container for a municipal bus depot in Southern California. Their challenge? They had overnight charging for 30 electric buses, but peak afternoon demand charges were killing their economics. They also needed resilience against public safety power shutoffs (PSPS).

The installation followed the blueprint above. The twist was the EMS programming. We set it to charge the container from the grid during super off-peak, low-cost hours, then discharge it to support bus charging during the 4-9 PM peak window, shaving over 40% off their demand charges. During a PSPS event last fall, the system's black start capability kicked in. It formed a stable microgrid, and the buses were able to charge on schedule, completely islanded from the

failed main grid. The project paid for itself in under 3 years just on demand charge savings the resilience was a bonus.



## The Tech Behind the Box: Keeping It Simple & Safe

I know terms get thrown around. Let me demystify two that matter most for your bottom line and safety.

- **C-rate (Charge/Discharge Rate):** Think of this as the "power personality" of the battery. A high C-rate means it can charge or discharge very quickly crucial for responding to a sudden grid outage or handling the spike when multiple trucks plug in. Our mobile units are engineered for high C-rates without sacrificing lifespan, which directly translates to fewer containers needed for the same job.
- **Thermal Management:** This is the unsung hero. Batteries generate heat, and heat degrades them. A cheap system might just use fans. Our design uses a liquid cooling system that precisely controls each battery module's temperature. Honestly, I've opened up units after 5 years in the Texas sun, and the cell degradation is remarkably low. This directly improves your Levelized Cost of Energy (LCOE) the total lifetime cost per kWh stored and delivered. A stable, long-lived system has a lower LCOE.

The entire philosophy at Highjoule is to engineer this complexity out of your way. You get a container that meets UL 9540 and IEC 62619 safety standards, with a simple interface that shows "Ready," "Charging," "Discharging," or "Fault." The hard work is done inside the box.

## Your Next Step: Questions to Ask

You don't need to be a battery expert. If you're considering a mobile power solution for your charging site, start with these three questions for any vendor:

1. "Can you walk me through a recent, similar installation timeline and the major hurdles you faced?" (If they can't, they lack field experience).
2. "How is the black start function tested and certified to comply with my local grid codes (like IEEE 1547 in the US)?"
3. "What does the long-term service and performance guarantee look like, and who in my region performs the

maintenance?"

The transition to electric transport is about more than just chargers. It's about building a resilient, cost-effective energy ecosystem around them. The right mobile power solution isn't an expense; it's the enabling asset that de-risks your entire operation. What's the single biggest grid-related risk facing your next charging project?

Author: Thomas Han

12+ years agricultural energy storage engineer / Highjoule CTO

URL: <https://glenproperty.co.za/articles/step-by-step-installation-of-black-start-capable-mobile-power-container-for-ev-charging-stations>

